

Forat LinnDrum MIDI SysEx procedure using MIDIOX

Instructions and LinnDrum template files created by Forat

MIDIOX (<http://www.midiox.com>) is a great free MIDI utility program for PCs and you'll need Rev **7.0.2.372** or higher for use with the LinnDrum.

You may download it via this link if needed:

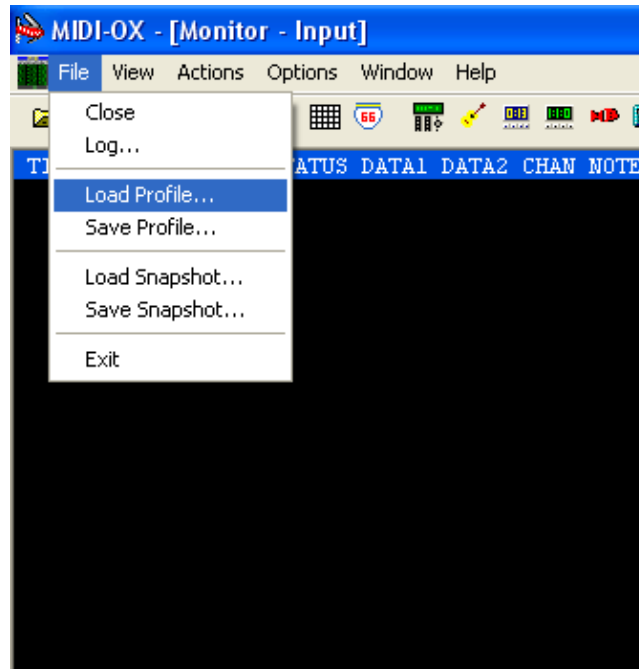
<http://www.midiox.com/zip/midioxse.exe>

Note: To avoid data loss, use the Cassette Interface and the **Store** function on the LinnDrum to backup any important data onto an audio track on your DAW. Then use the **Verify** function to make sure it's good before proceeding. Next using the procedures below, perform a MIDI SysEx Dump then load it back into the LinnDrum. You can test the integrity of the SysEx load by using the **Verify** function to check it against your DAW backup. If it still verifies okay then everything has worked flawlessly and you may skip this extra step in the future.

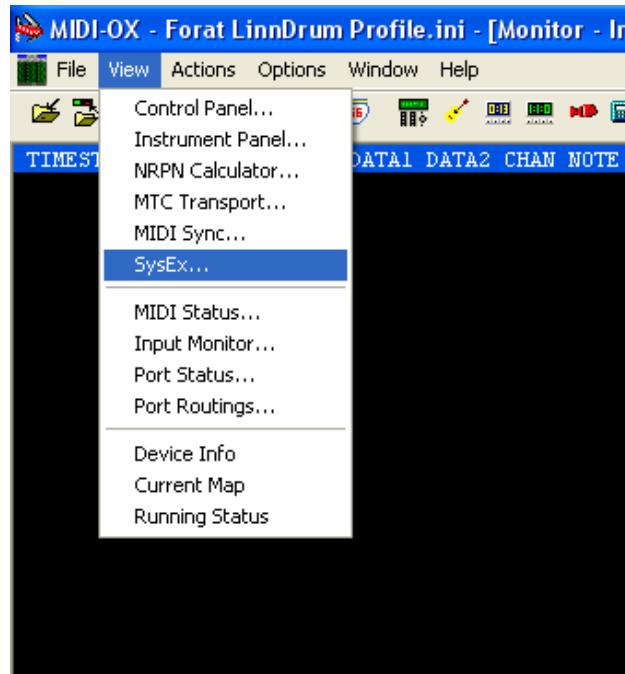
Connect MIDI IN on your MIDI interface box to the MIDI OUT on the LinnDrum and MIDI OUT of the interface box to the MIDI IN on the LinnDrum.

Saving your Data

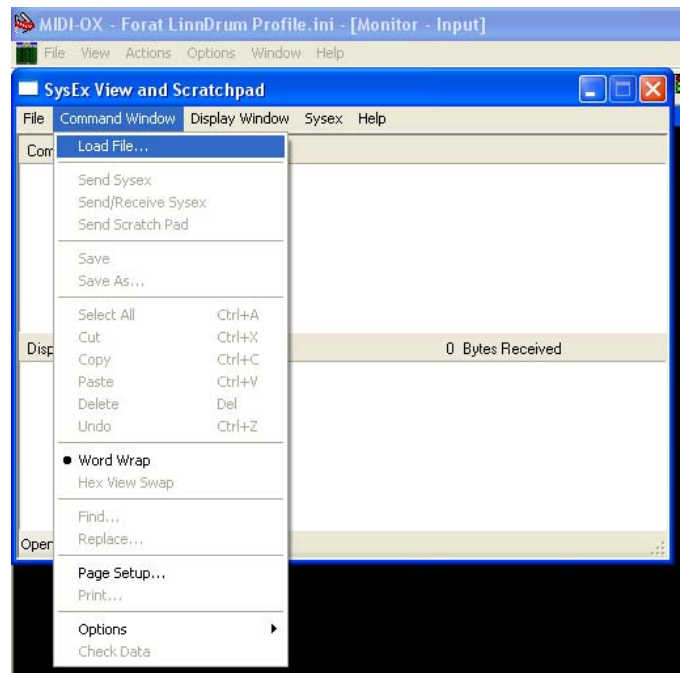
Under the **File** menu tab, select **Load Profile** and load the enclosed **Forat LinnDrum Profile.ini**. This should set up everything needed to work with the LinnDrum:



Next, click on the **View** tab then select **SysEx** from the dropdown menu:



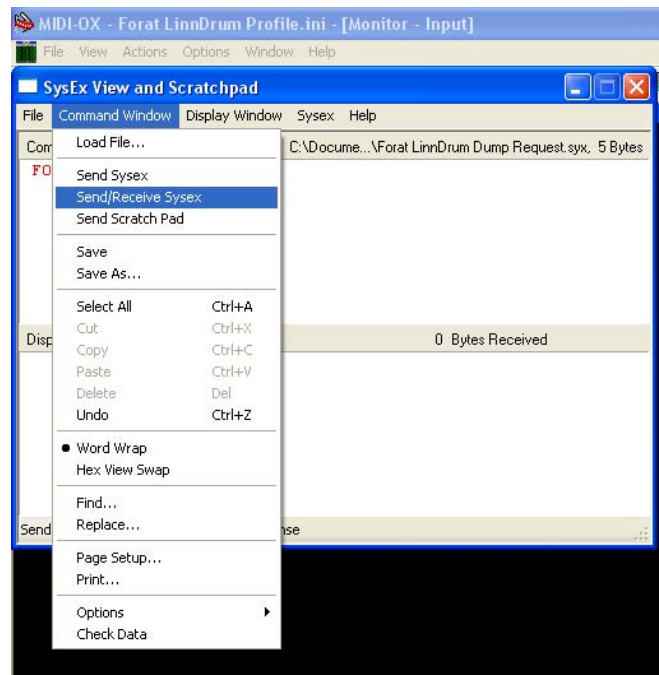
You'll need to send a Dump Request Command to the LinnDrum to release its data. Under the **Command Window** dropdown menu, select **Load File** then load the enclosed **Forat LinnDrum Dump Request.syx** file:



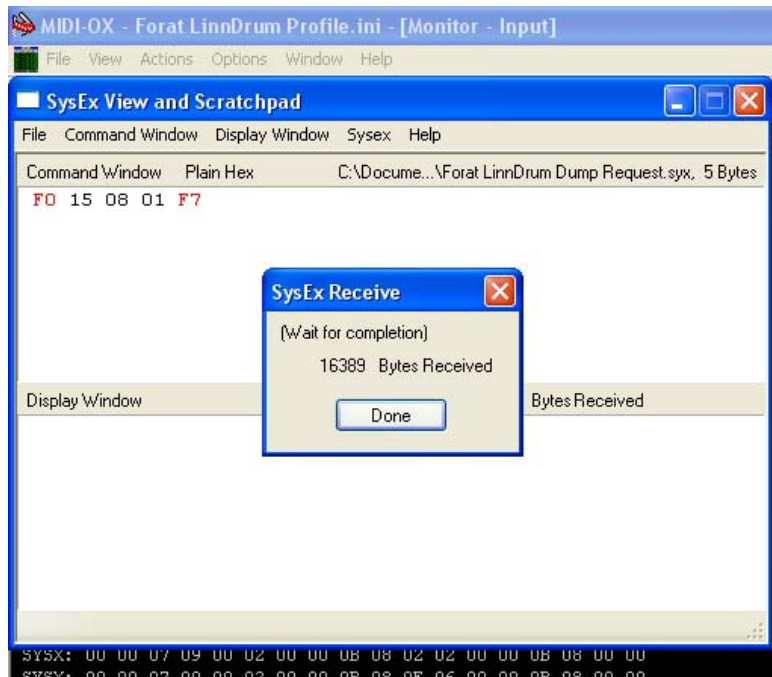
You should now be looking at the following Dump Request Command:



You're ready to initiate a SysEx Dump from the LinnDrum. Select **Send/Receive Sysex** from the **Command Window** dropdown menu. You'll be prompted to enter a file name for the incoming SysEx data so enter it, then click **Save**.

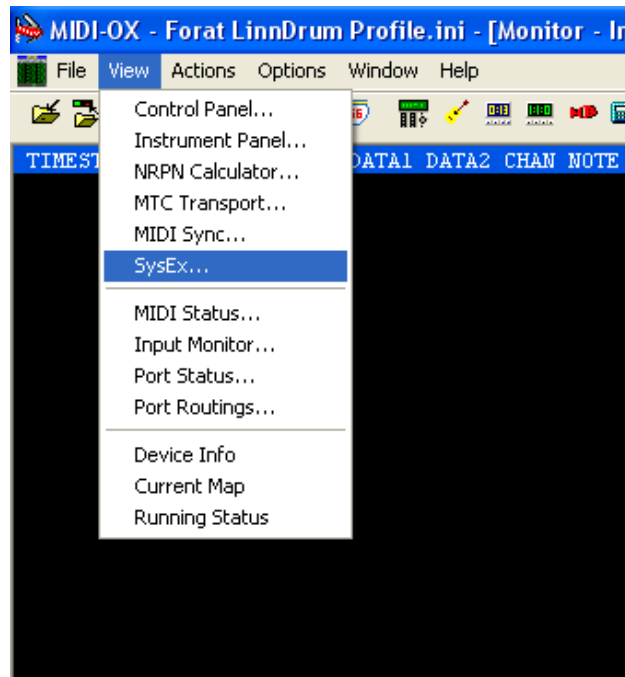


The **SysEx Receive** window should pop up, then after about 6 seconds it should display **16389 Bytes Received**. Click **Done** and your SysEx data is now saved.

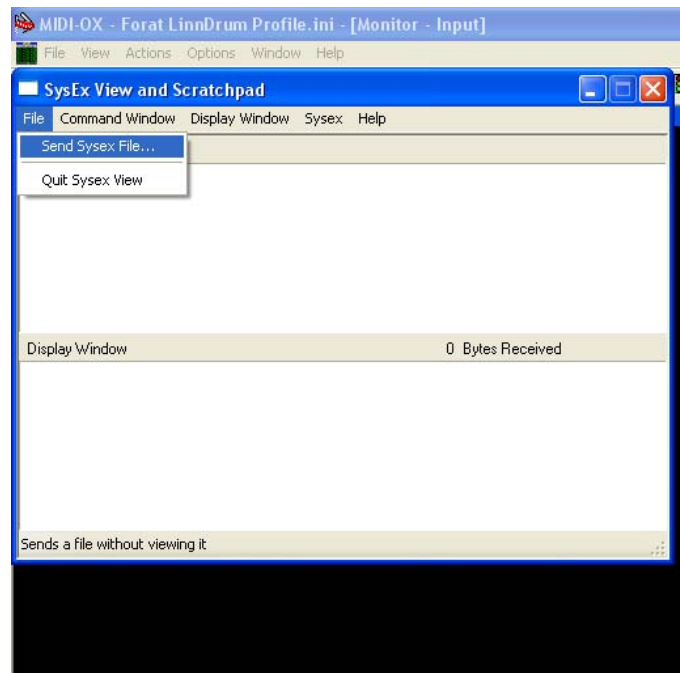


Loading your SysEx Data back into the LinnDrum

To load the SysEx data back into the LinnDrum, click on the **View** tab then select **SysEx** from the dropdown menu to bring up **SysEx View and Scratchpad** window:



Now under the **File** tab select **Send Sysex File**. Then choose the SysEx file you wish to load and it will be sent immediately:



The LinnDrum **Pattern** light will switch to **Song** then back to **Pattern** upon successful receipt of the SysEx file and your LinnDrum should now be loaded.